

PK15VG-xxxxE2:1LF



PMK01-SERIES

Rev.12-2009

- ✓ 15 Watt
- ✓ 2:1 Wide Input
- ✓ 1" x 1" Case
- ✓ 1.6 kV DC I/O Isolation
- ✓ Regulated Single Output
- ✓ Remote Control
- ✓ Short Circuit Prot.

All specifications typical at Ta=25°C, nominal input voltage and full load unless otherwise specified

Input Specifications

Voltage Range	2:1 Wide Input (See Table)
Input Filter	L-C Type

Output Specifications

Voltage Accuracy	± 2 %
Short Circuit Protection	Current Limit (Automatic Recovery)
Over Power Protection	Over 120% of Rating (Automatic Recovery)
Over Voltage Protection	Zener Diode Clamp
Line Regulation (LL-HL)	± 0.5 %, typ.
Load Regulation (10% - 100%)	± 1 %, typ.
Ripple	75 - 100 mV pk-pk, max.
Noise	100 – 125 mV, max.
Temperature Coefficient	± 0.02% / °C, max.

General Specifications

Efficiency	See Table
I/O Isolation Voltage (3 sec.)	1600 VDC
I/O Isolation Resistance	10 ⁸ Ohms
Switching Frequency	300 - 450 kHz, typ.
Humidity	95% rel H
Reliability Calculated MTBF (MIL-HDBK-217F)	> 0.8 Mhrs

Physical Specifications

Case Material	Six-side shielded Alu (non conductive Base)
Weight	~ 15 g, typ.

Environment Specifications

Operating Temperature	-40 to +70 °C (for 100% - See Derating Graph)
Maximum Case Temperature	105 °C
Storage Temperature	-55 to +105 °C
Cooling	Free Air Convection (10mm distance required)
RoHS Conform	Soldering 260 °C, max. (1.5mm from case 10s.)

Selection Guide

Single Output

Order #	Watt (Output)	Input Voltage (VDC)	Output Voltage (VDC)	Output Current Full Load (mA)	Efficiency (%)	Capacitor Load (uF)
SINGLE OUTPUT						
PK15VG-123R3E2:1LF	11.55	9-18	3.3	3500	85	1600
PK15VG-1205E2:1LF	15	9-18	5	3000	89	1600
PK15VG-1212E2:1LF	15	9-18	12	1250	88	470
PK15VG-1215E2:1LF	15	9-18	15	1000	88	330
PK15VG-243R3E2:1LF	11.55	18-36	3.3	3500	86	1600
PK15VG-2405E2:1LF	15	18-36	5	3000	89	1600
PK15VG-2412E2:1LF	15	18-36	12	1250	89	470
PK15VG-2415E2:1LF	15	18-36	15	1000	89	330
PK15VG-483R3E2:1LF	11.55	36-72	3.3	3500	84	1600
PK15VG-4805E2:1LF	15	36-72	5	3000	88	1600
PK15VG-4812E2:1LF	15	36-72	12	1250	88	470
PK15VG-4815E2:1LF	15	36-72	15	1000	88	330

If you need other specifications, please enquire.

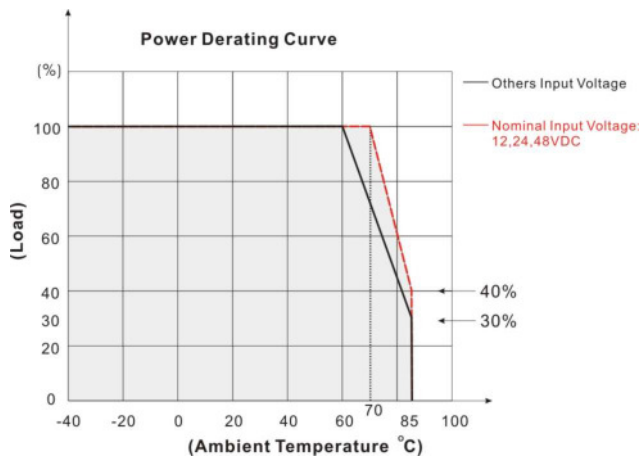
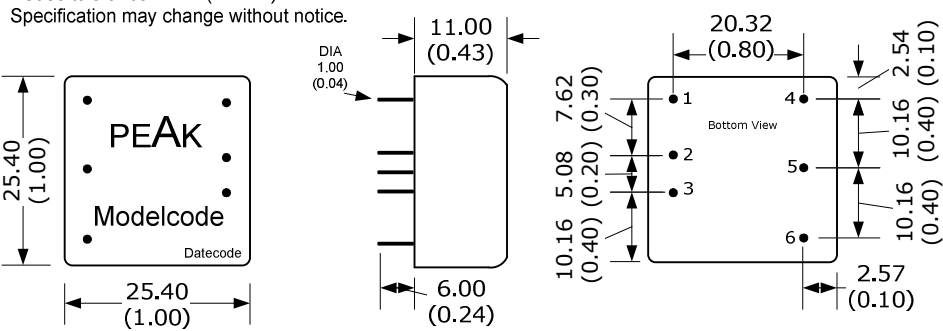
Notes:

Package / Pinning / Derating

All dimensions are typical in millimeters (inches).

- Pin diameter: 1.0 +/-0.05 (0.04 +/-0.002)
- Pin pitch tolerance: +/-0.35 (+/-0.014)
- Case tolerance +/-0.5 (+/-0.02)

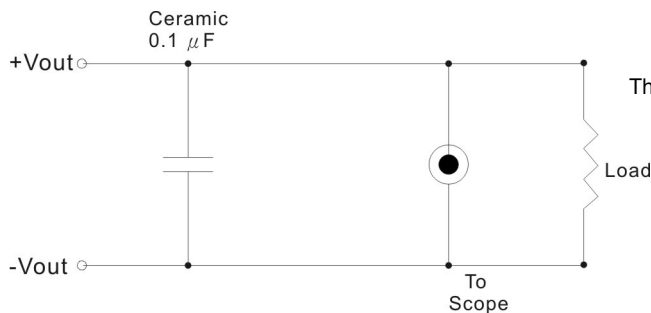
1" x 1" – Aluminium Case



PIN CONNECTION	
#	SINGLE
1	Ctrl ON/OFF
2	- Vin
3	+ Vin
4	- Vout
5	Omitted
6	+Vout

App Notes:

Output Noise:



The output noise is measured with 0.1μF tantalum capacitor.