



PX14AU-xxxxE

PX14AU-SERIES

Rev. 07-2019

- ✓ **3 Watt**
- ✓ **Unregulated Output**
- ✓ **SIP 4 Case**
- ✓ **Short Circuit Protection**
- ✓ **High Efficiency up to 85%**

All specifications typical at Ta=25°C, nominal input voltage and full load unless otherwise specified

Input Specifications

Voltage Range	See table
Input Filter	Capacitor

Output Specifications

Voltage accuracy	±5%, max
Line regulation (per 1% Vin change)	± 1.2 %
Load regulation (10% to 100%)	(5-9 Vout) 18%,max. (12-15 Vout) 12%,max.
Ripple & noise (20 MHz bandwidth)	60 mV pk-pk
Short circuit protection	Continuous

General Specifications

Efficiency	Up to 85% (See table)
Switching Frequency	100 kHz
Humidity (rel.)	95%
MTBF(+25°C) (Calculated MIL-HDBK-217F)	>3500000 hours
Isolation Resistance	1000 MOhm, min.
I/O Isolation	1000 VDC

Environment / Physical Specifications

Operation Temp.	-40°C to 85°C
Weight	1.9g
Cooling	Nature / Free Air
Case Material	Plastic (UL94V-0 rated)
Packing	42 pcs / tube



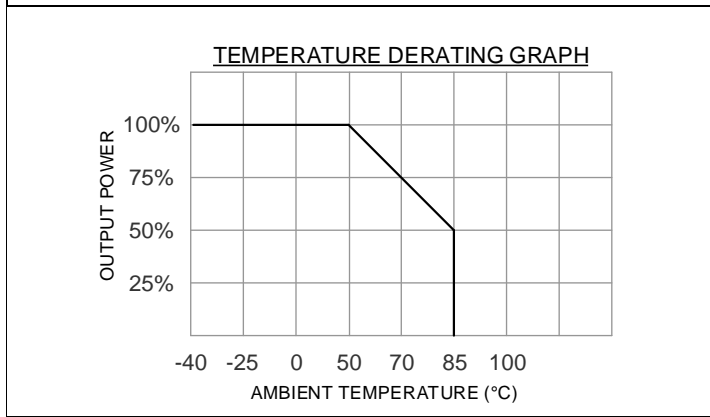
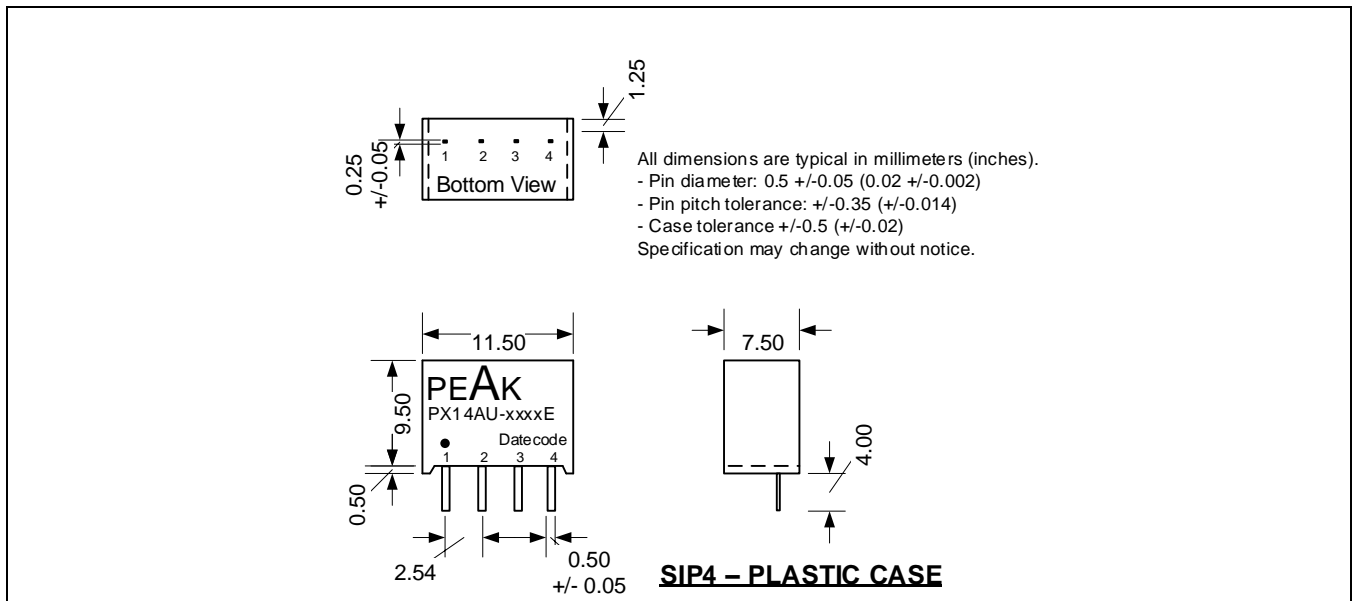
Product Guide

Order #	Input Voltage (VDC)	Output Voltage (VDC)	Output Current (mA)	Efficiency V_{in} (%) Typ
<u>SINGLE OUTPUT</u>				
PX14AU-0505E	5	5	600	80
PX14AU-0509E	5	9	333	83
PX14AU-0512E	5	12	250	83
PX14AU-0515E	5	15	200	83
PX14AU-0905E	9	5	600	81
PX14AU-0909E	9	9	333	81
PX14AU-0912E	9	12	250	84
PX14AU-0915E	9	15	200	84
PX14AU-1205E	12	5	600	83
PX14AU-1209E	12	9	333	83
PX14AU-1212E	12	12	250	85
PX14AU-1215E	12	15	200	85
PX14AU-1505E	15	05	600	81
PX14AU-1509E	15	09	333	83
PX14AU-1512E	15	12	250	84
PX14AU-1515E	15	15	200	84

If you need other specifications, please enquire.

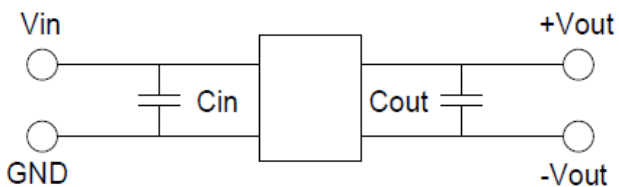


Package / Pinning / Derating



PIN CONNECTIONS	
#	SINGLE
1	+ Vin
2	+ Vin
3	- Vout
4	+ Vout

APP NOTES



5V: Cin	4.7uF, 25V	5V: Cout	10uF, 25V
9V: Cin	4.7uF, 25V	9V: Cout	4.7uF, 25V
12V: Cin	2.2uF, 25V	12V: Cout	2.2uF, 25V
15V: Cin	1uF, 25V	15V: Cout	1uF, 50V

